

ALAYA PAVILION

Competition Design Brief

September 2022

Brought to you by

ALAYA

GARDENS

blissful
by nature



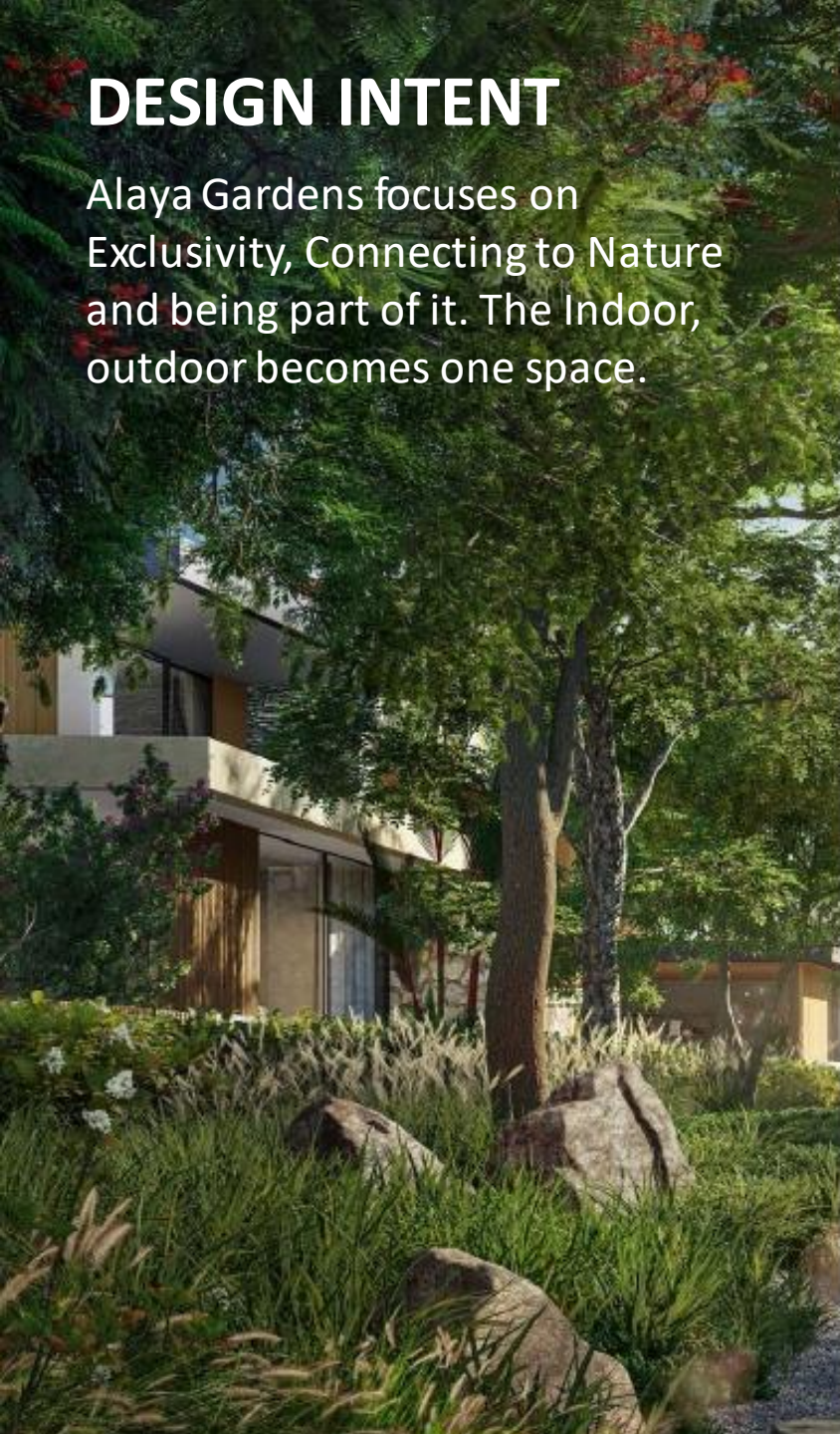
تلال الغاف
Tilal Al Ghaf

An aerial photograph of a large residential development. A specific section in the upper left is highlighted with a yellow border and contains white buildings, while the rest of the development is shown in a faded, greyish-green tone. The highlighted area is a curved, semi-circular cluster of buildings. The rest of the image shows a dense grid of residential streets and buildings, with a central water feature.

ALAYA GARDENS WITHIN TAG

DESIGN INTENT

Alaya Gardens focuses on Exclusivity, Connecting to Nature and being part of it. The Indoor, outdoor becomes one space.



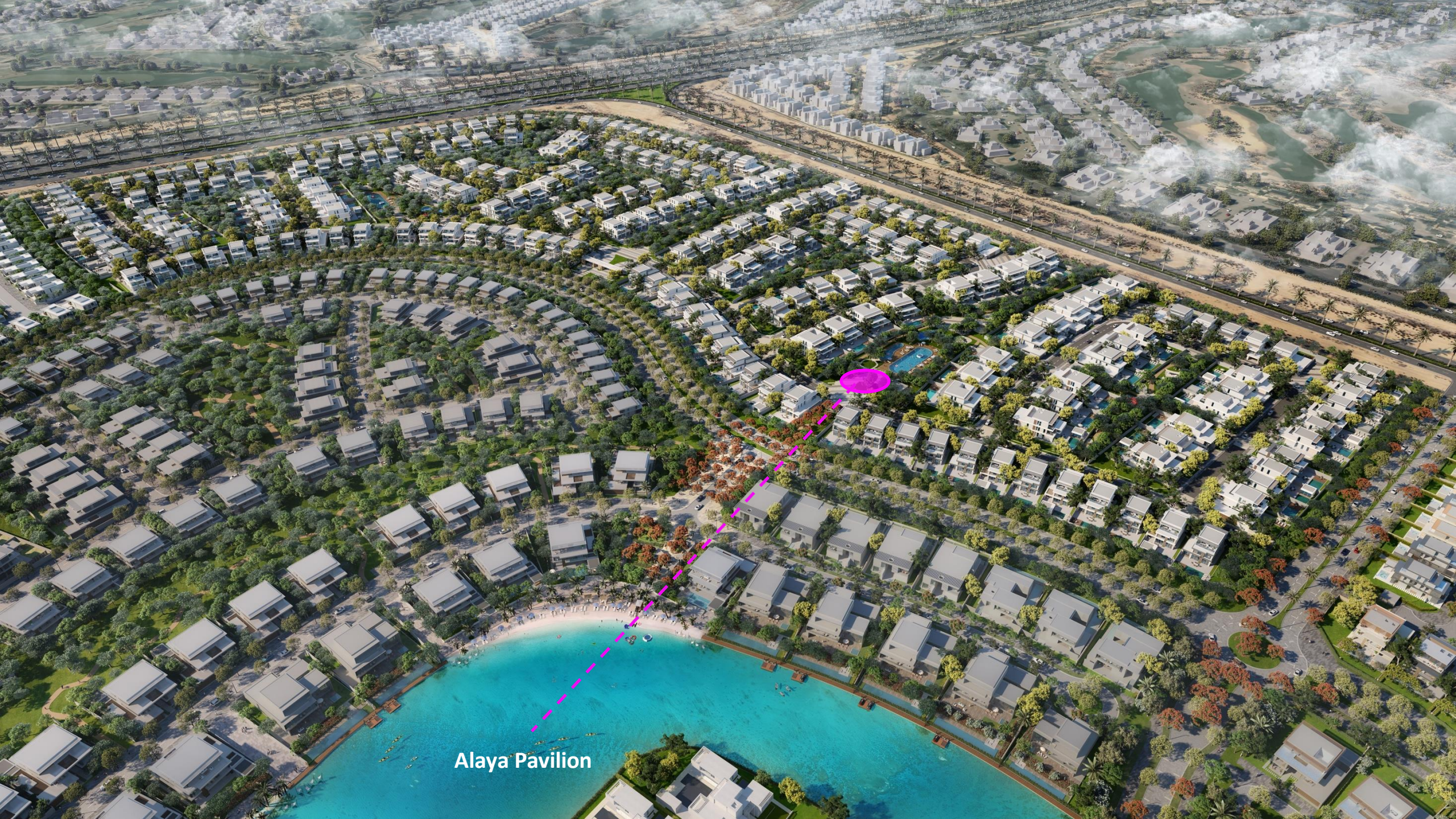
PUBLIC REALM DESIGN FOR ALAYA

There are 2 locations for the Pavilion,

*Students Can design 1 identical pavilion which can be repeated; or 2 pavilions with slight variation in Façade or function

 Alaya Pavilion





Alaya Pavilion

Alaya Gardens Provide two Façade Schemes options for their client, as shown in the picture there is the light Scheme and the Dark Scheme.

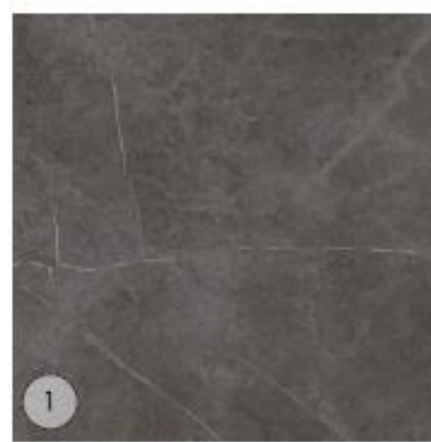


LIGHT: THE SERENE

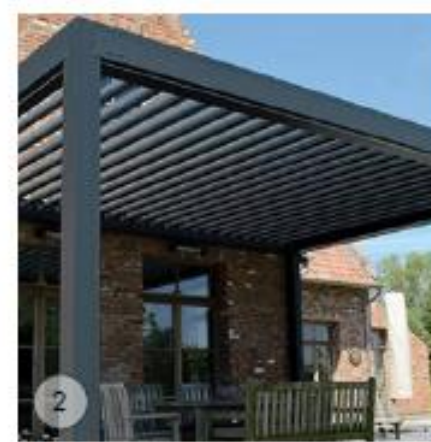


DARK: THE URBAN

DARK SCHEME MATERIALITY



1
PORCELAIN TILE



2
PROFILED ALUMINUM



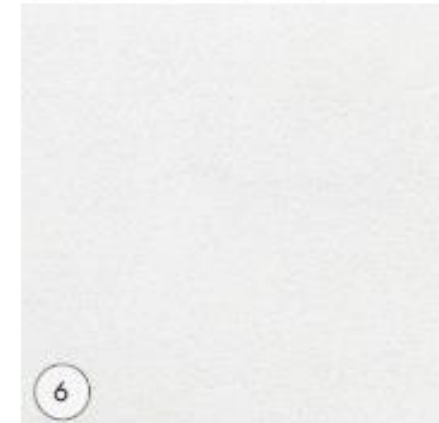
3
PORCELAIN TILE - WALNUT FINISH



4
ALUMINUM/COMPOSITE WOOD LOUVRES



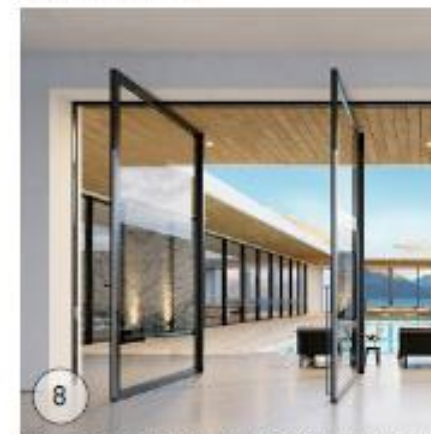
5
STONE CLADDING



6
RENDER PAINT



7
PORCELAIN TILE - SMOKE



8
LOW IRON GLASS WITH BLACK ALUMINUM
ED A & AC



9
SECTIONAL WHITE GARAGE DOOR

LIGHT SCHEME MATERIALITY



1
PORCELAIN TILE



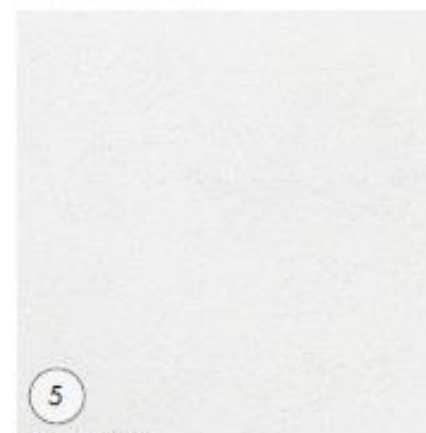
2
PROFILED ALUMINUM



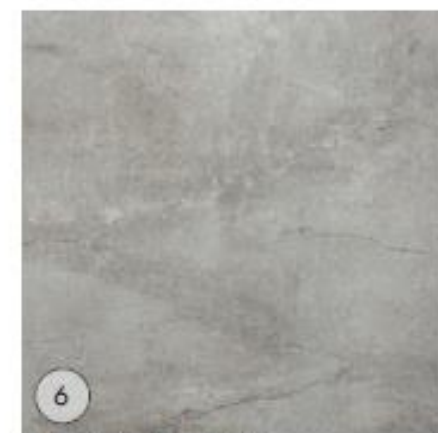
3
PORCELAIN TILE - WALNUT FINISH



4
STONE CLADDING



5
RENDER PAINT



6
PORCELAIN TILE - SMOKE



7
ALUMINIUM/COMPOSITE WOOD LOUVRES



8
LOW IRON GLASS WITH BROWN
ALUMINUM FRAME



9
SECTIONAL WHITE GARAGE DOOR

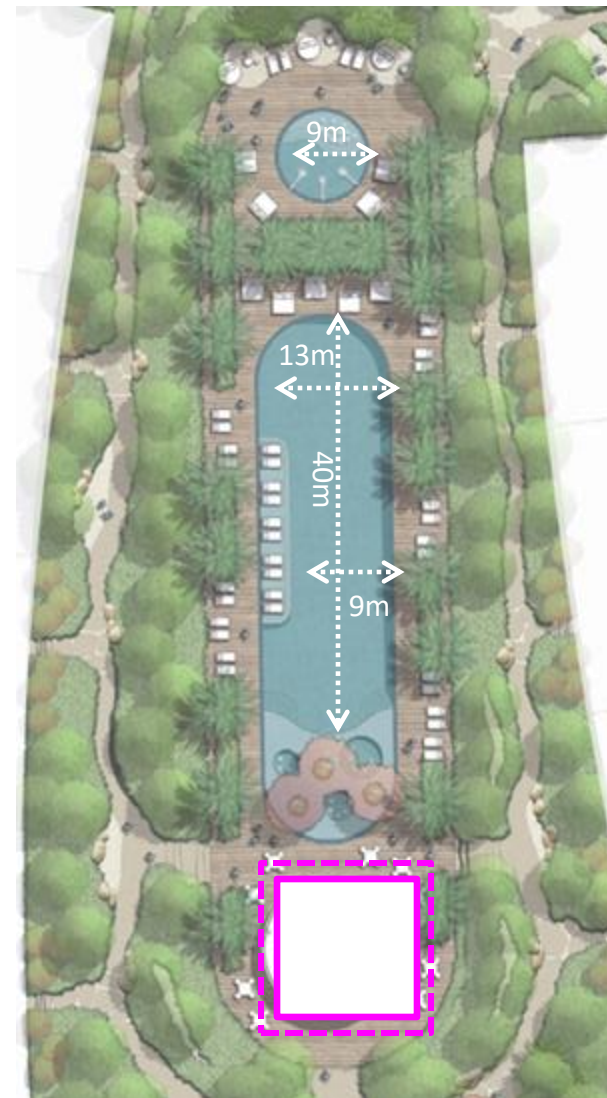
ALAYA PARK PROGRAM

LEGEND

1. Park Entrance Plaza/ Drop-off Area
2. Swimming Pool Area
3. Club house (By Others)
4. Forest Walk
5. Multi-Functional Lawn & Incidental Play
6. Forest Understorey
7. Informal Games/sports Area
8. Amphitheatre
9. Seating Pod
10. Incidental Boulder Seating
11. Connection to Neighbourhood Park
12. Connection to Perimeter Corridor
13. Villa Rear Access to Park



Alaya
Pavilion



ALAYA PAVILION | Size & Program

The Brief

The project entails the design of the Pavilion at the Alaya Gardens Development. Each Pavilion will serve around 100 stand alone Luxury villas. The site is surrounded by mostly 6-bedroom Villas. The views from the Villas to the Pavilion are critical.

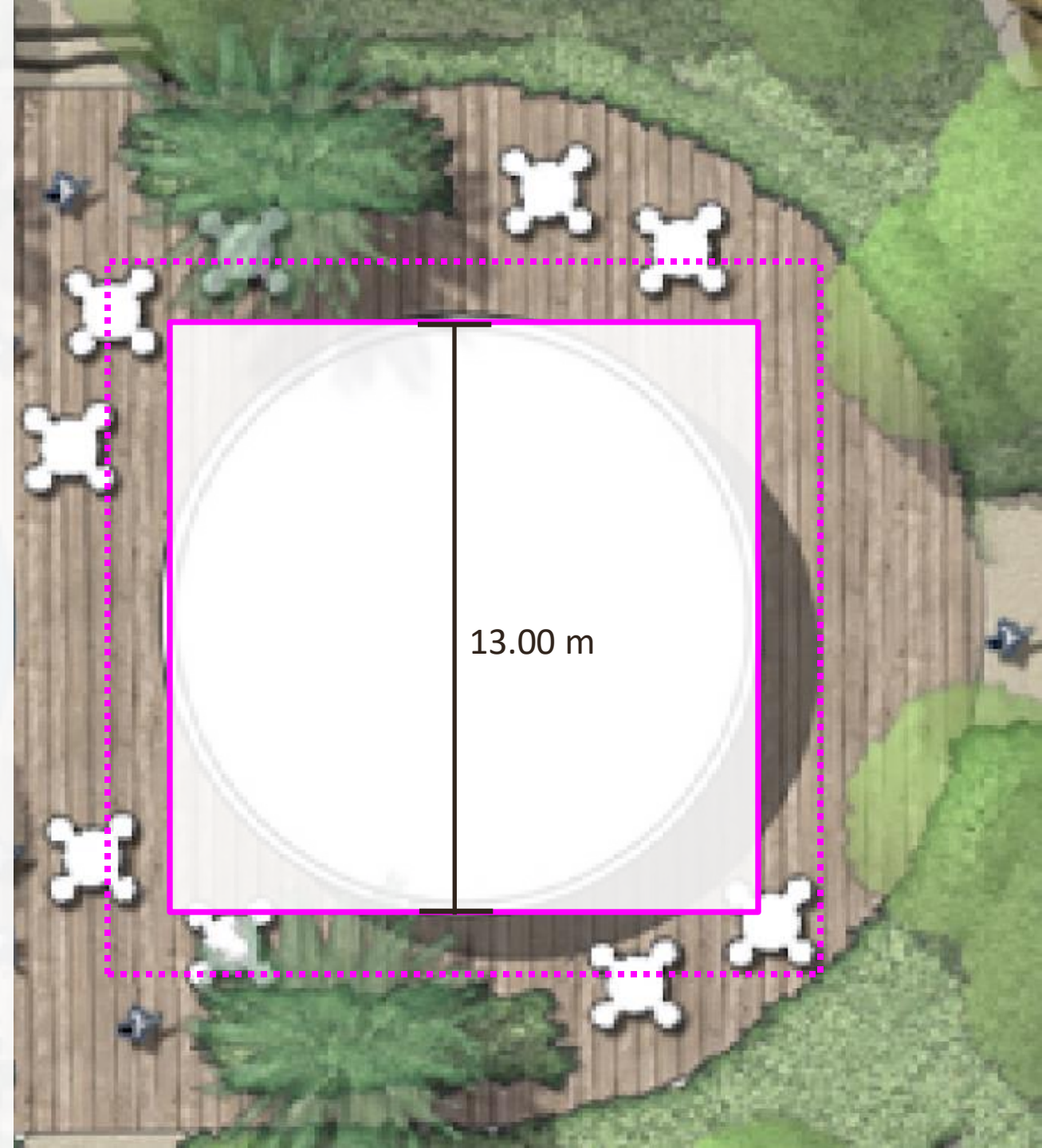
The shape of the Pavilion/plot and the immediate surrounding landscape can be changed if Necessary. However, amount remain complementary to the remainder of the facilities as shown.

The Pavilion area ranges between 150 -200 sqm

The Pavilion is a single story with Maximum Height of 7 meters including the facade cladding design

The program of the Pavilion is to include the following functions or activities:

1. Gym
2. Luxury accessible washroom
3. Café / Juice Bar
4. Potential program: Students to propose additional functions to the above such as Workspace/ meet up space/ or any other Innovative solutions.



POOL DESIGN



FLOATING FEATURE TREES



POOL EDGE TREATMENT



SHALLOW POOL LOUNGERS



PALM GROOVE FOREST



KID'S POOL EDGE



FEATURE BUBBLES



REQUIRED ELEMENTS:

1. Research and development of the club house to identify
 - Optional program
 - Innovative ideas: related to Technology, Materials, & Others.
 - Sustainability
2. Recommended program and concept sketch
3. Site plan indicating the Pavilion relationship to the surrounding landscape
4. Floor plan explaining the design
5. One selected section
6. Two selected elevations
7. Renderings
8. 3D Models



THANK YOU!